



# Open Sky Candidate Education Session

## Legislative Planning Committee



May 18, 2016

## Contacts

John R. Bartle, Ph.D.

Dean, College of Public Affairs and Community Service

University of Nebraska Omaha

Omaha NE 68182

[jbartle@unomaha.edu](mailto:jbartle@unomaha.edu)

(402) 554-3989

Jerome Deichert

Director, Center for Public Affairs Research

University of Nebraska at Omaha

Omaha NE 68182

[jdeicher@unomaha.edu](mailto:jdeicher@unomaha.edu)

(402) 554-2134

## Nebraska Legislative Planning Committee

- The Nebraska Legislature's Planning Committee was created in 2009 with the passage of LB 653, in order to help establish a process of long-term state planning with the Nebraska Legislature.
- The committee's charge is to assist state government in identifying emerging trends, assets, and challenges of the state and the long-term implications of the decisions made by the Nebraska Legislature.

## Nebraska Legislative Planning Database

- The goals and benchmarks in the database were developed and approved by the Legislature's Planning Committee to present a common-sense and data-driven assessment of key areas important to Nebraskans' quality of life.
- This database is a joint initiative with the Nebraska Legislature's Planning Committee and the University of Nebraska at Omaha College of Public Affairs and Community Service.
- <http://news.legislature.ne.gov/lpc/>

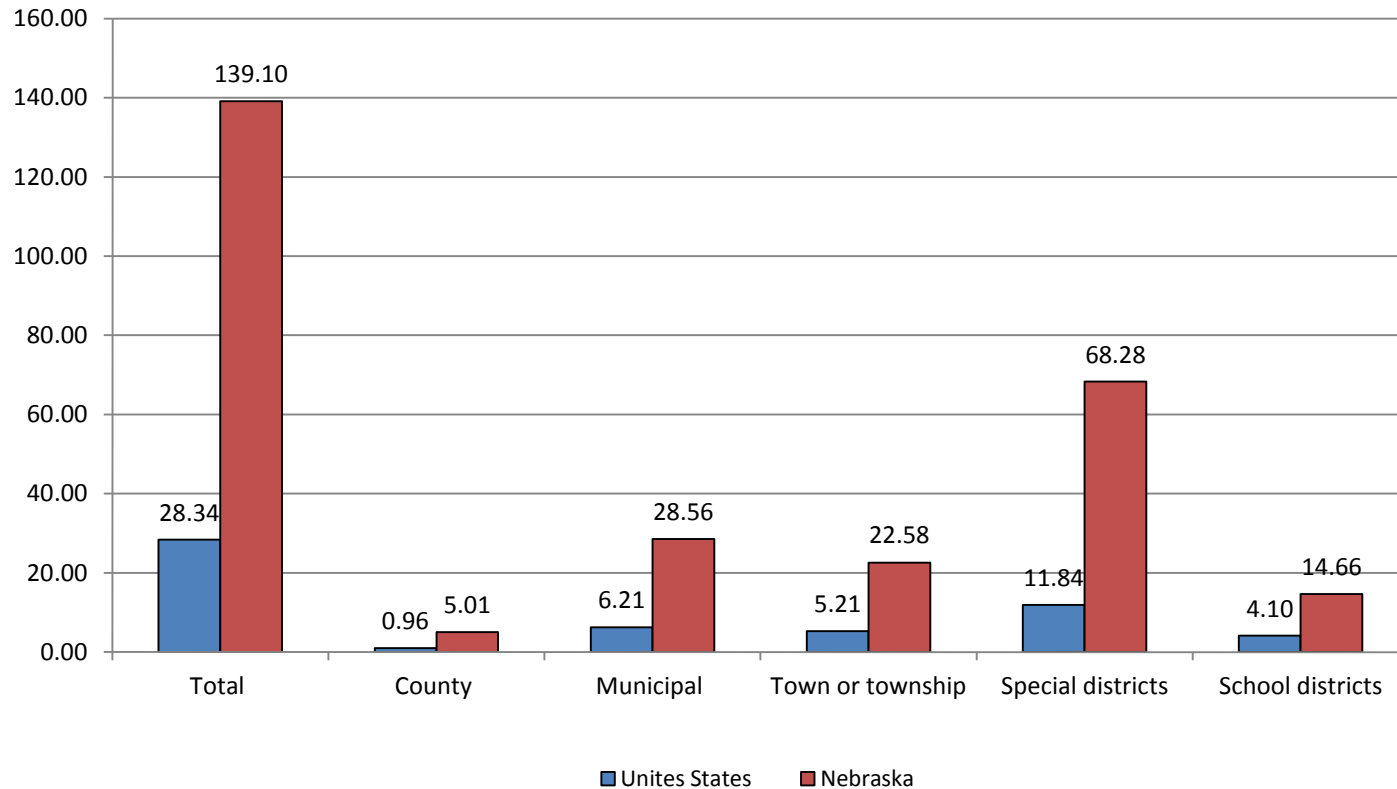
## Benchmarks in the Planning Database

There are nine areas of policy indicators:

- Agriculture
- Economy
- Education
- Health and Human Services
- Natural Resources
- Public Safety
- State and Local Government
- Transportation
- Telecommunications

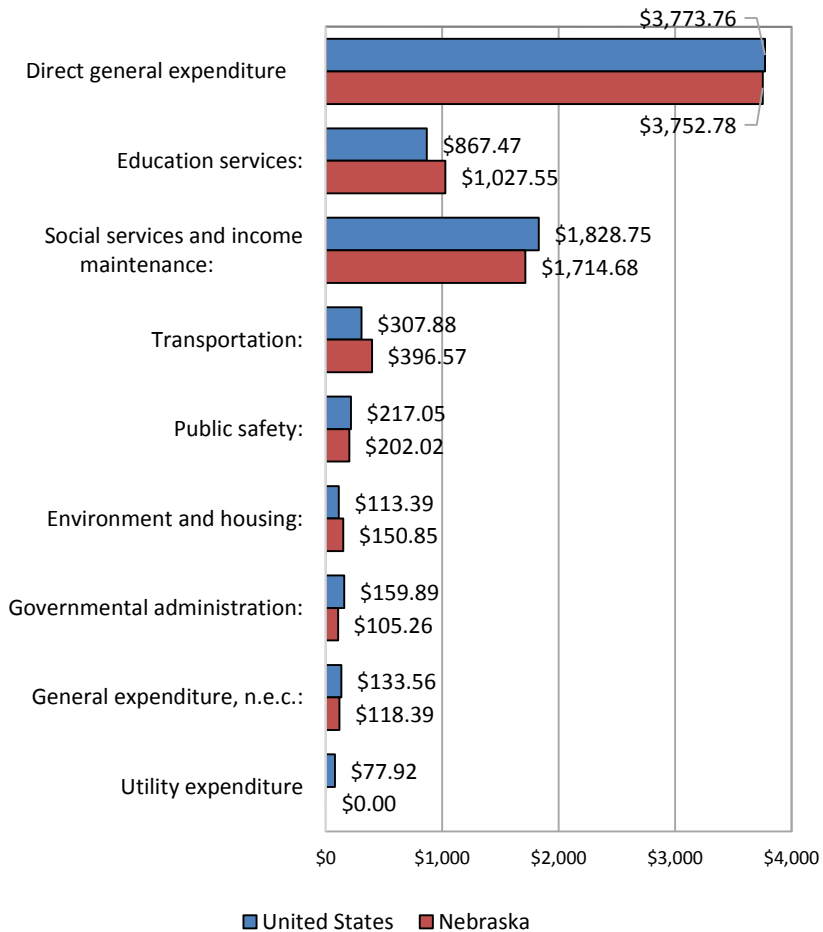
# Planning Database

Number of Local Government Units Per 100,000 Population by Type, Nebraska and the United States:  
2012



# Planning Database

**State Government Expenditures Per Capita  
by Function, Nebraska and the United States:  
2012-2013**



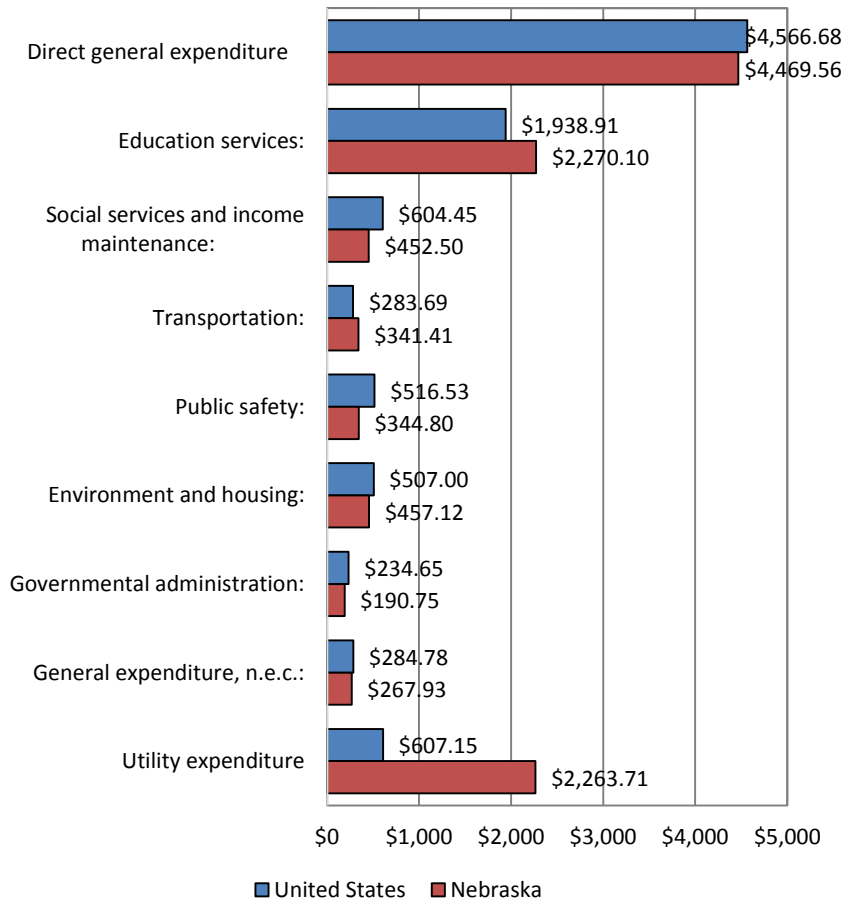
**State Government Expenditures Per Capita, Regional  
Comparison: 2012-2013**

	State Expenditures Per Capita	National Rank
United States	\$3,773.76	
Wyoming	\$5,753.56	5
North Dakota	\$5,738.82	6
Iowa	\$4,251.76	20
Minnesota	\$4,072.82	24
South Dakota	\$3,868.65	29
<b>Nebraska</b>	<b>\$3,752.78</b>	<b>31</b>
Kansas	\$3,611.56	36
Missouri	\$3,352.77	41
Colorado	\$3,205.12	44

Note: Direct General Expenditure only  
Source: U.S. Census Bureau, Government Finance Statistics; Prepared by UNO Center for Public Affairs, (Population estimation July 1, 2013)

# Planning Database

**Local Government Expenditures Per Capita by Function, Nebraska and the United States: 2012-2013**



**Local Government Expenditure Per Capita, Regional Comparison: 2012-2013**

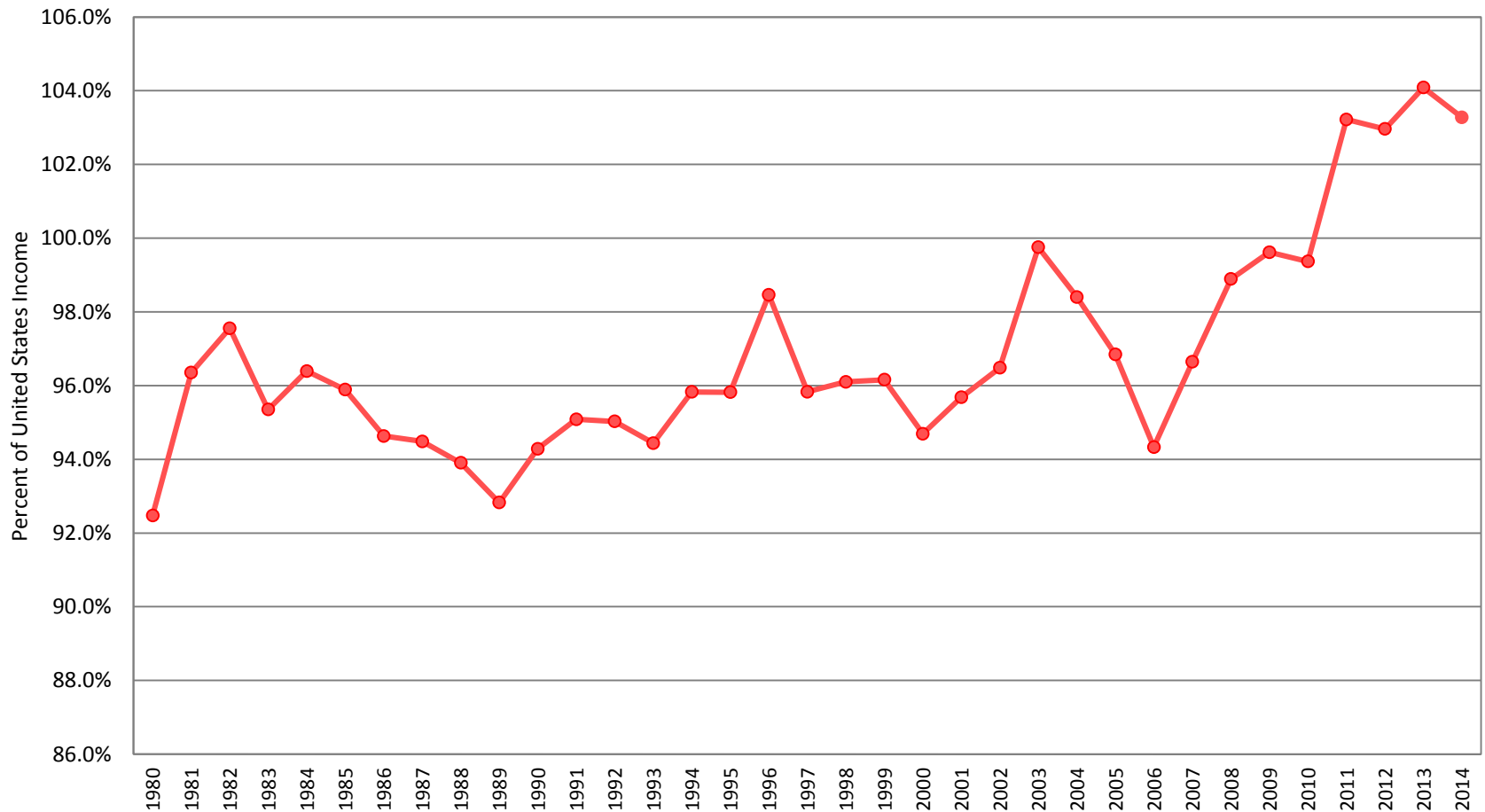
	Local Expenditure per capita	National Rank
United States	\$4,566.68	
Wyoming	\$7,556.64	3
Minnesota	\$5,008.24	7
Iowa	\$4,785.15	9
Colorado	\$4,639.65	10
North Dakota	\$4,564.25	12
<b>Nebraska</b>	<b>\$4,469.56</b>	<b>15</b>
Kansas	\$4,421.81	17
Missouri	\$3,863.89	31
South Dakota	\$3,482.95	38

Note: Direct General Expenditure Only  
 Source: U.S. Census Bureau, Government Finance Statistics; Prepared by UNO Center for Public Affairs, (Population estimation July 1, 2013)



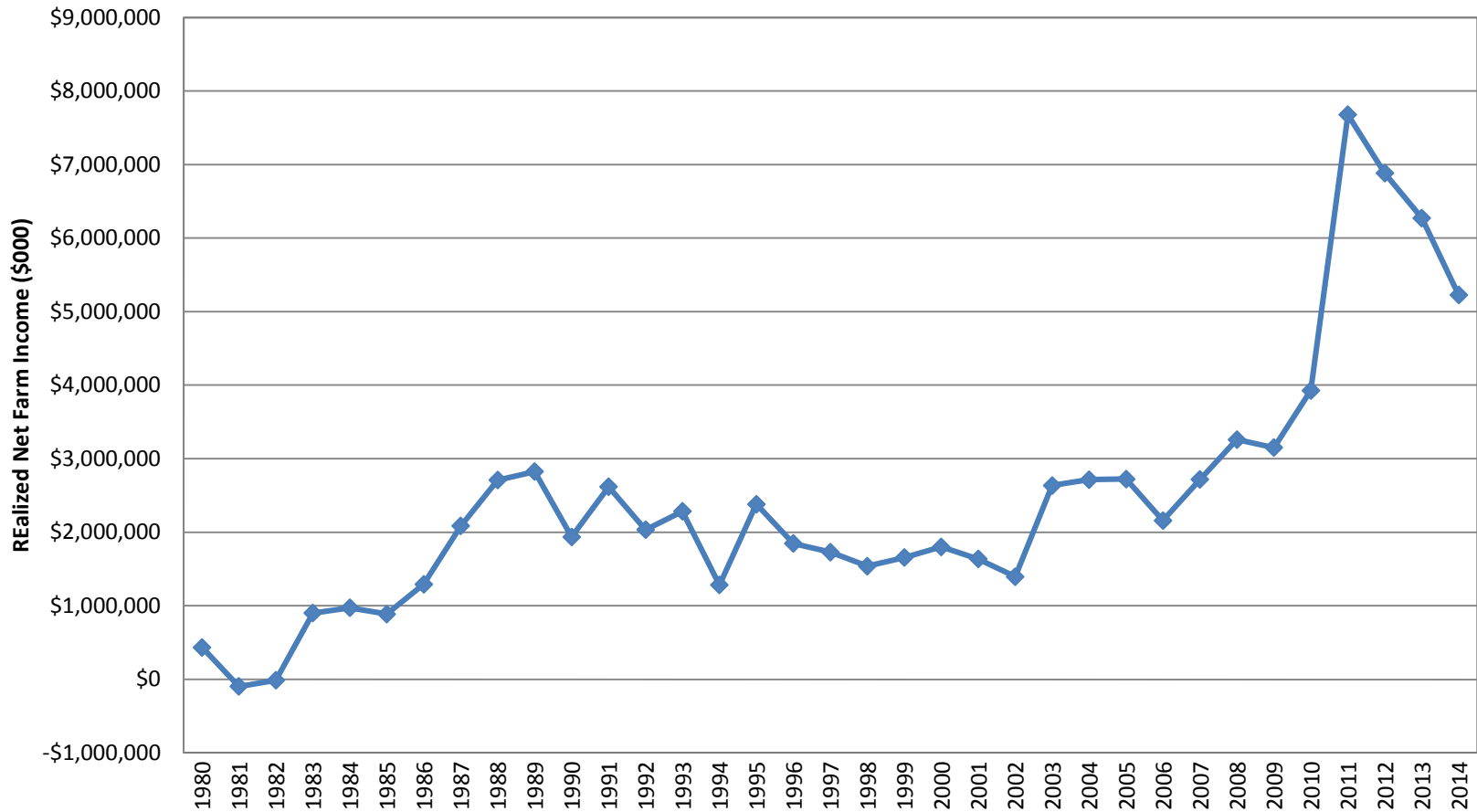
# Planning Database

**Nebraska Per Capita Personal Income as a Percentage of United States Per Capita Personal Income 1980-2014**



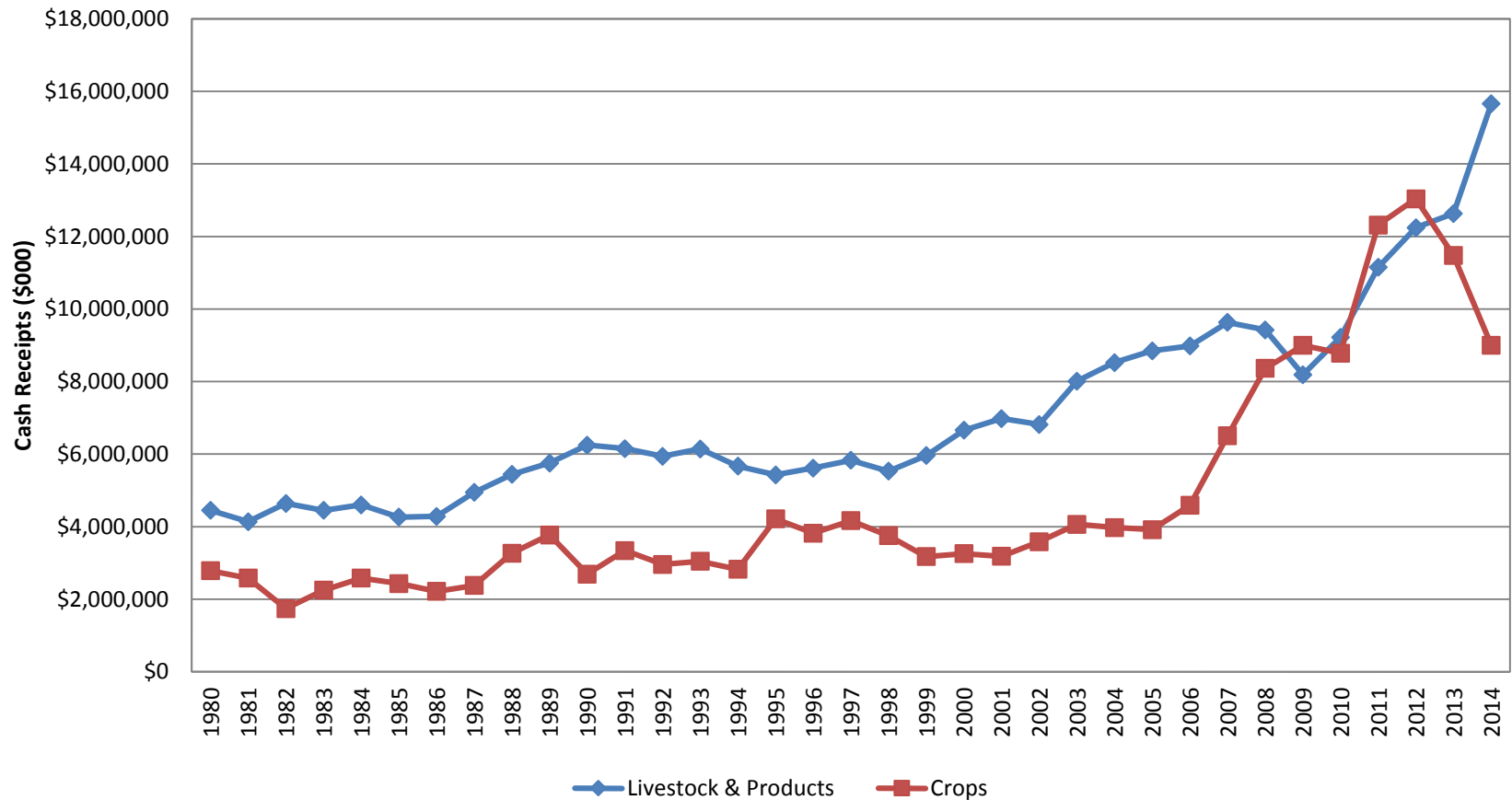
# Planning Database

## Realized Net Farm Income, Nebraska: 1980-2014



# Planning Database

**Cash Receipts from Livestock and Products and Crops, Nebraska:  
1980-2014**



# Associated Reports

Nebraska Legislative District Quick Facts from the 2010-2014 American Community Survey

Selected Characteristics for Nebraska Legislative Districts from the 2010-2014 American Community Survey

Selected Characteristics for Nebraska Counties from the 2010-2014 American Community Survey

Selected Characteristics for Census Tracts in Douglas, Sarpy, Lancaster, and Hall Counties, Nebraska, from the 2010-2014 American Community Survey

Own Children with All Parents in the Labor Force for the State of Nebraska and Legislative Districts and Counties from the 2010-2014 American Community Survey

Ratio of Income to Poverty Level for Children under 18 Years as a Percentage of the Population for Whom Poverty Is Determined for Nebraska Legislative Districts from the 2010-2014 American Community Survey

<http://www.unomaha.edu/college-of-public-affairs-and-community-service/center-for-public-affairs-research/programs/nebraska-state-policy-initiative.php>

# Nebraska Legislative District Quick Facts District 13\*

	2010-2014 American Community Survey		2008-2012 American Community Survey	
	Nebraska	District 13	Nebraska	District 13
Total population	1,855,617	37,104	1,827,306	37,565
Persons under 3 years, percent of total	4.2	4.0	4.3	4.0
Persons under 5 years, percent of total	7.0	7.5	7.2	7.3
Persons under 18 years, percent of total	24.9	26.7	25.1	26.8
Persons 18 to 64 years, percent of total	61.2	59.8	61.4	59.5
Persons 65 years and over, percent of total	13.9	13.6	13.5	13.7
Female persons, percent of total	50.3	52.2	50.5	50.2
White not Hispanic persons, percent of total	81.2	51.4	82.1	53.0
Black or African American not Hispanic persons, percent of total	4.5	33.3	4.4	31.2
Amer. Indian & Alaska Native not Hispanic persons, percent of total	0.7	0.7	0.7	0.6
Asian not Hispanic persons, percent of total	1.9	2.0	1.8	1.7
Not Hispanic Persons reporting two or more races, percent of total	1.8	5.3	1.7	5.9
Persons of Hispanic or Latino Origin, percent of total	9.7	7.3	9.1	7.5
Minority persons, percent of total	18.8	48.6	17.9	47.0
Foreign born persons, percent of total	6.5	5.3	6.2	5.2
High school graduate or higher, percent of persons aged 25+	90.5	86.9	90.4	86.7
Bachelor's degree or higher, percent of persons aged 25+	29.0	20.6	28.1	20.5
Median household income (2014 dollars)	\$52,400	\$42,478	\$52,980	\$43,605
Persons below poverty level, percent	12.9	17.0	12.4	17.2
Persons under 5 years below poverty, percent of age group	21.4	31.1	20.0	34.1
Persons under 18 years below poverty, percent of age group	17.6	26.0	16.7	25.7
Persons 65 years and over below poverty, percent of age group	7.8	9.0	7.9	8.4
Labor force participation rate, percent of persons aged 16+	70.5	64.1	71.0	64.7
Unemployment rate, percent of civilian labor force	5.4	10.7	5.6	11.4
Children under age 6 with all parents in labor force, percent of age group	72.9	70.2	73.9	72.8
Total housing units	805,256	15,176	797,210	15,019
Vacant housing units, percent of total	9.2	9.3	9.6	7.9
Home ownership rate, percent of occupied housing units	66.5	65.6	67.6	69.5
Median value of owner-occupied housing units (2014 dollars)	\$130,100	\$104,600	\$130,644	\$106,413
Children 3 and 4 enrolled in school, percent of age group	45.8	41.5	47.4	39.4
Children 3 and 4 enrolled in public school, percent of enrolled group	59.3	63.0	57.2	64.2
Persons with no health insurance, percent of total	11.0	15.1	11.4	14.9
Persons under 18 with no health insurance, percent of age group	5.6	6.5	6.2	5.5
Persons receiving Medicaid or means-tested public coverage, percent of total	13.1	23.2	12.6	23.0

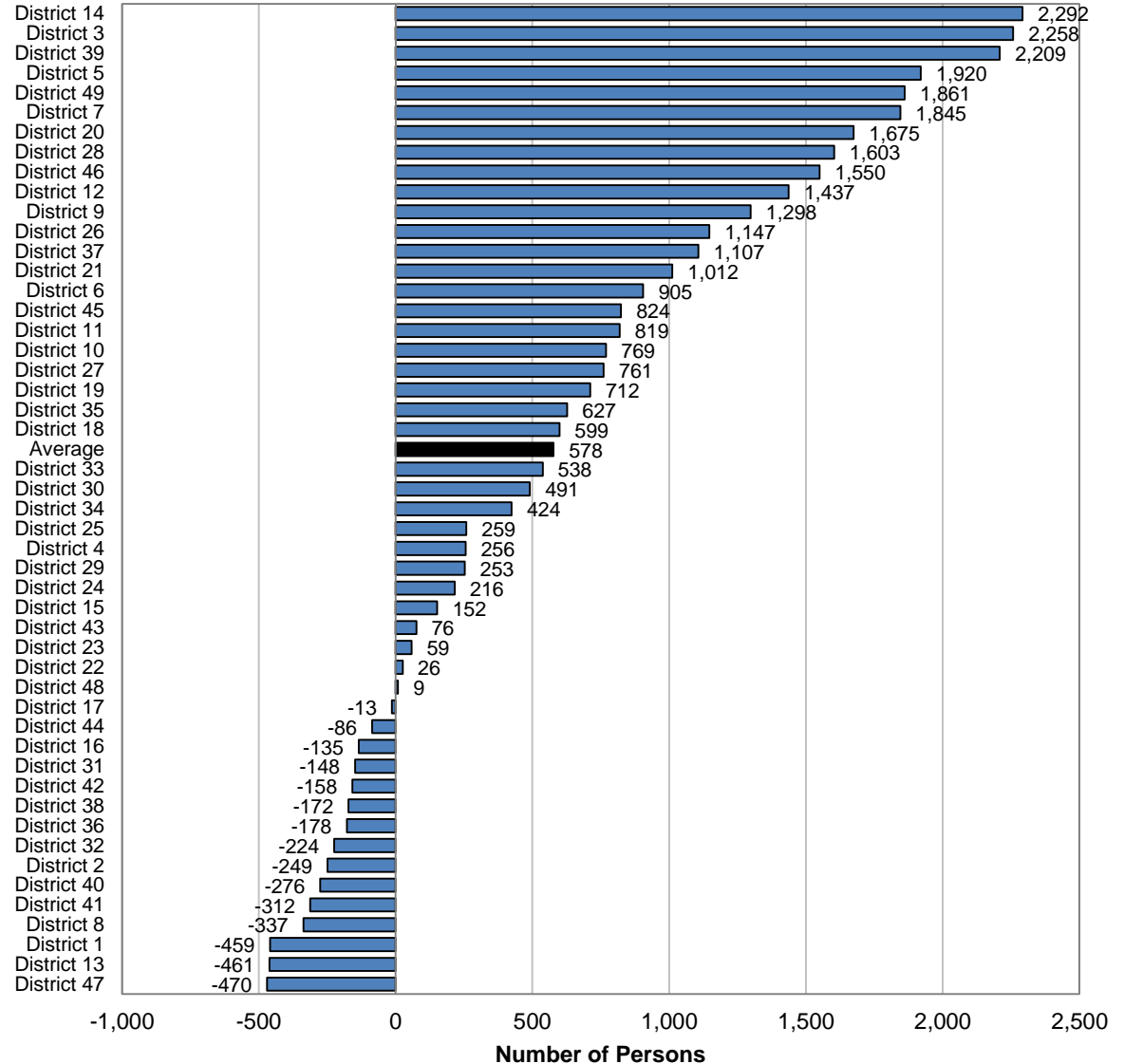
\*Tables in this report are based on the District Boundaries for the 103rd Legislature that were approved by the Legislature in 2011 and were based on the data from the 2010 Census. Because of changes in Legislative District boundaries, the tables in this report are not directly comparable to prior reports using the previous boundaries.

Source: U.S. Census Bureau, 2010-2014 and 2008-2012 American Community Survey.

Prepared by Center for Public Affairs Research,  
University of Nebraska at Omaha, December 2015.

# Nebraska Legislative District Quick Facts

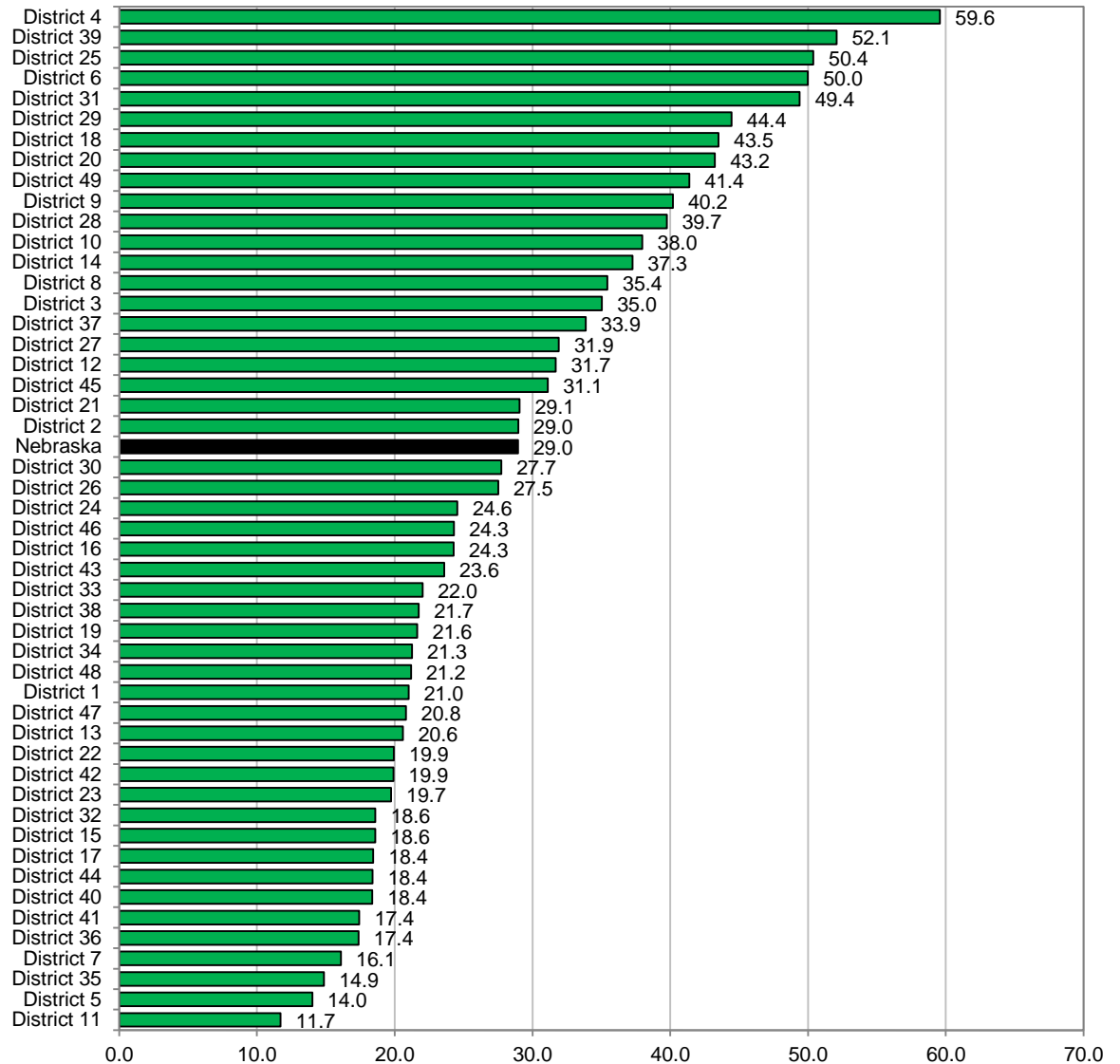
Figure 1. Change in the Total Population for Nebraska Legislative Districts: 2008-2012 to 2010-2014



Source: U.S. Census Bureau, 2010-2014 and 2008-2012 American Community Survey  
 Prepared by: Center for Public Affairs, Research University of Nebraska at Omaha, December 2015

# Selected Characteristics for Nebraska Legislative Districts

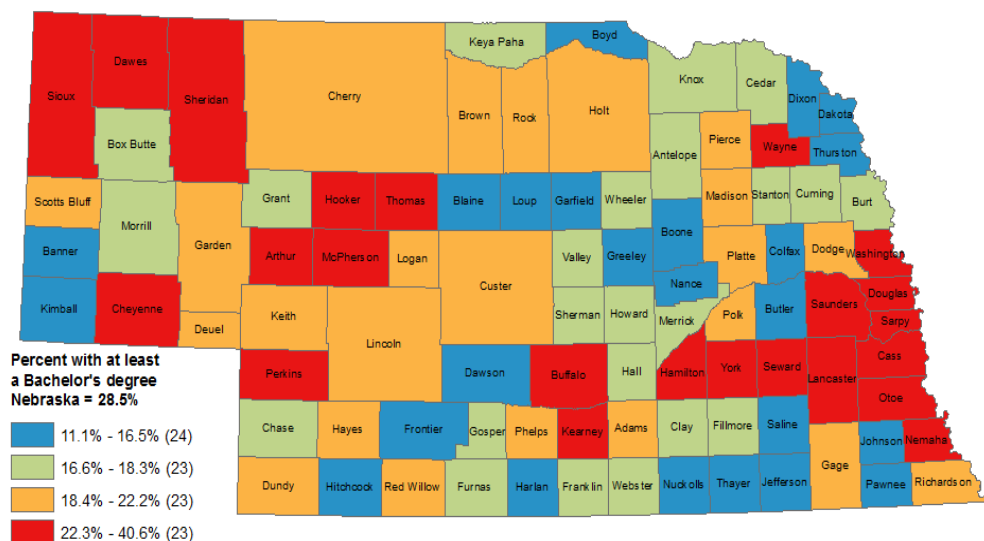
Figure 6. Persons with Bachelor's Degrees as a Percentage of the Population Aged 25 Years or Older for Nebraska Legislative Districts: 2010-2014



Source: U.S. Census Bureau, 2010-2014 American Community Survey

## Selected Characteristics for Nebraska Counties

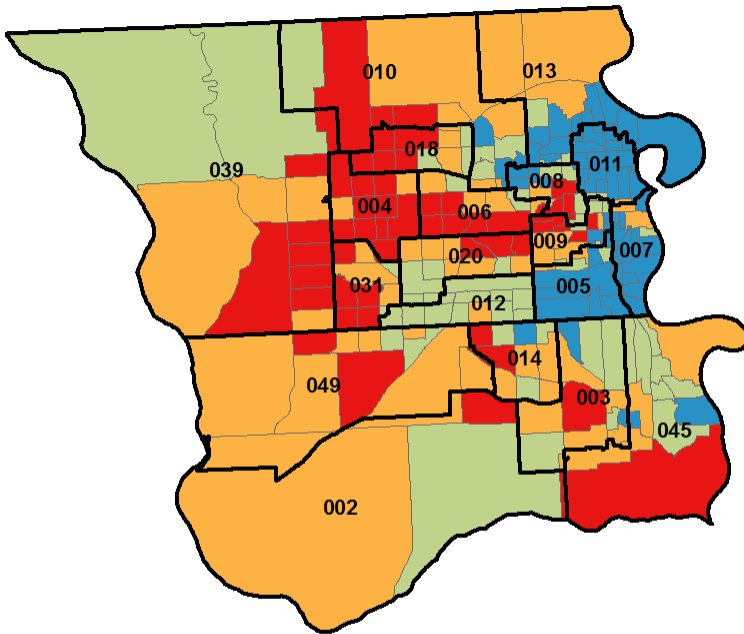
Persons with at least a Bachelor's Degree as a Percentage of the Population Aged 25 Years or Older for Nebraska Counties: 2009-2013



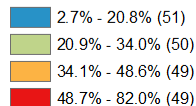
Nebraska			28.5%		
County	Bachelor's degree	Rank	County	Bachelor's degree	Rank
Dawes	40.6	1	Boone	13.8	84
Douglas	36.4	2	Hitchcock	13.8	85
Sarpy	36.2	3	Garfield	13.8	86
Lancaster	36.1	4	Nuckolls	13.7	87
Wayne	33.1	5	Jefferson	13.5	88
Arthur	31.7	6	Nance	13.2	89
Buffalo	31.6	7	Johnson	12.8	90
Washington	28.9	8	Loup	12.6	91
Sioux	27.0	9	Pawnee	11.6	92
Kearney	26.4	10	Dakota	11.1	93



## Persons with at least a Bachelor's Degree as a Percentage of the Population Aged 25 Years or Older for Douglas and Sarpy Counties, Nebraska: 2009-2013



Percent with at least a Bachelor's degree  
 Douglas County = 36.4%; Sarpy County = 36.2%  
 Nebraska = 28.5%



Source: U.S. Census Bureau, 2009-2013 American Community Survey 5-Year Estimate  
 Prepared by: Center for Public Affairs Research, University of Nebraska at Omaha, February 2015

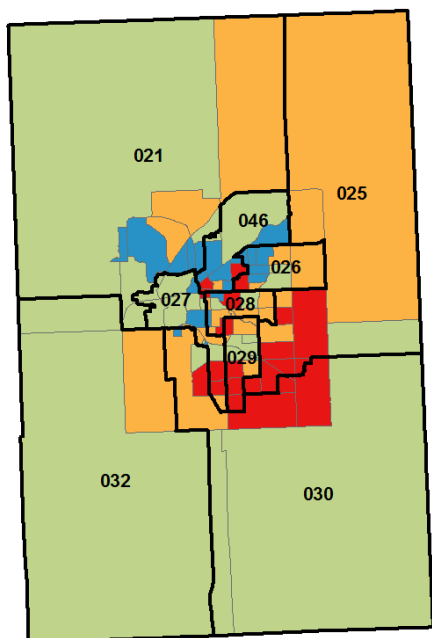
## Selected Characteristics for Census Tracts

Douglas County 36.4%						
Census tract	Bachelor's degree	Rank		Census tract	Bachelor's degree	Rank
47	82.0	1		29	6.3	147
75.13	76.8	2		27	5.8	148
68.04	75.4	3		4	5.7	149
75.15	72.2	4		20	5.3	150
74.71	72.0	5		32	5.2	151
67.04	71.3	6		30	5.1	152
74.46	69.8	7		26	5.0	153
75.14	68.5	8		59.02	3.8	154
74.41	67.2	9		6	3.5	155
73.14	66.3	10		7	2.7	156

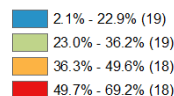
Sarpy County 36.2%						
Census tract	Bachelor's degree	Rank		Census tract	Bachelor's degree	Rank
106.30	66.6	1		101.07	27.2	34
106.22	62.3	2		101.04	25.7	35
106.28	56.6	3		106.19	22.9	36
106.24	55.3	4		104.01	22.4	37
106.16	51.8	5		105.01	22.3	38
102.03	50.1	6		105.02	22.3	39
102.08	49.6	7		103.05	19.7	40
106.27	48.5	8		106.14	19.1	41
106.18	47.9	9		105.03	18.0	42
102.05	45.9	10		104.02	17.3	43

## Selected Characteristics for Census Tracts

Persons with at least a Bachelor's Degree as a Percentage of the Population Aged 25 Years or Older for Lancaster County, Nebraska: 2009-2013



Percent with at least a Bachelor's degree  
Lancaster County = 36.1%; Nebraska 28.5%



Lancaster County 36.1%						
Census tract	Bachelor's degree	Rank		Census tract	Bachelor's degree	Rank
24	69.2	1		18	15.5	65
37.13	64.5	2		30.03	15.4	66
37.20	64.0	3		10.01	14.8	67
36.09	63.5	4		35	14.4	68
37.18	62.3	5		32.02	14.2	69
37.15	57.2	6		3	14.0	70
37.16	56.6	7		31.03	12.4	71
19	54.6	8		1	10.1	72
6	54.5	9		36.01	2.9	73
37.19	54.1	10		9832	2.1	74

## Policy Briefs

- Beginning with the 2012 update of the Planning Committee's report, a section containing Policy Briefs was added.
- These Policy Briefs address some of the issues that were identified when reviewing the indicators presented in the database.
- The purpose of the Policy Briefs is to identify and explore in greater depth issues identified by the evidence presented.
- The Policy Briefs do not recommend specific policies but rather describe options and considerations that deal with the issues.

World-Herald editorial:  
Trends show aging-related challenges  
Jan. 1, 2016

...These trends indicate increasing expenses in coming decades for families as well as state government. Two out of every five dollars the Nebraska state government spends on Medicaid are to cover long-term care services for seniors. This demand will grow as the state's population continues to age.

As a **2013 report by the Legislature's Planning Committee observed**, "clearly, any intervention that delays or prevents unnecessary nursing home placement will have a substantial impact on long-term care costs for Nebraska" ...

# Nebraska Legislative Planning Committee: Policy Briefs

## 2012 Report

- Addressing the Long-Term Care Needs of Nebraska's Aging Population through Expanded Assistance to Caregivers
- Cost Savings in Medical Care for the Elderly through Expanded Case Management
- City-County Consolidation: Implications for Nebraska
- County Mergers: Evidence for Nebraska
- Early Childhood Education for Children with All Parents in the Labor Force

## 2013 Report

- Addressing the Long-Term Care Needs of Nebraska's Aging Population through Home and Community Base Services
- Adult Children with Disabilities Living with Parents: Policy Implications
- Challenges for Water Quality Policy in Nebraska: Short- and Long-Term
- Policy Challenges for Drinking Water Quality in Nebraska
- Tax Comparisons for Nebraska

# Nebraska Legislative Planning Committee: Policy Briefs

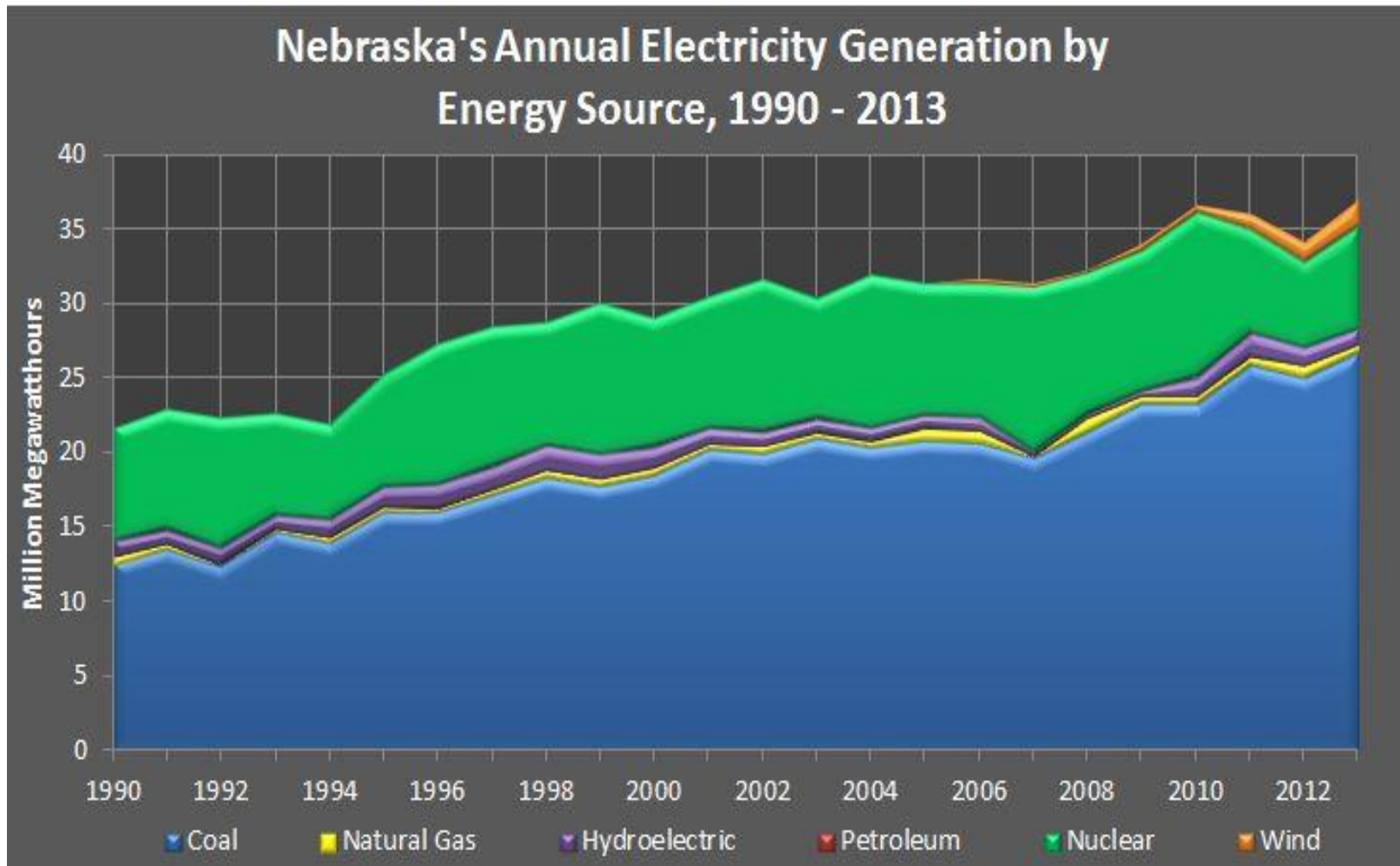
## 2014 Report

- Nebraska Universal Service Funds
- The Impact of Changing Births on Nebraska's School Aged Children
- State and Local Government Debt
- Local Government Pensions
- Rural Transit
- Adults with Mental Health Disabilities and Their Caregivers in Nebraska: An Overview
- Program Evaluation of the Avenue Scholars Program
- Urban and Rural Food Deserts in Nebraska
- Pediatric Cancer in Nebraska: Policy Implications

## 2015 Report

- Nebraska's Energy Future: Considerations and Challenges
- Nebraska's Rural Population: Growth and Decline by Age
- Small Business and Entrepreneurship in Nebraska
- Considerations for K-12 Finance Reform in Nebraska

## Nebraska's Energy Future: Considerations and Challenges



# Nebraska's Energy Future: Considerations and Challenges

Installed Wind Capacity (MW)

