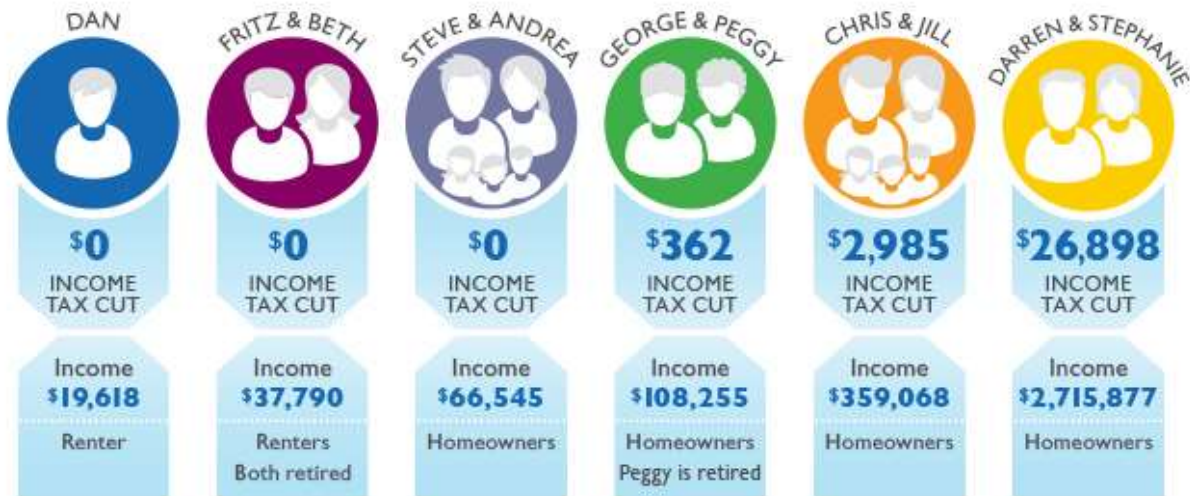


## Cut the top income tax rate to 5.75%

In this scenario, Nebraska's top personal income tax rate would be cut to 5.75%. The cut would result in a \$156 million revenue loss for the state, which is close to the amount of revenue the state would gain under the proposed sales tax base expansion we examined earlier in this series.



Learn more about our "Real Taxpayers of Nebraska" at [www.openskypolicy.org/the-real-taxpayers-of-nebraska](http://www.openskypolicy.org/the-real-taxpayers-of-nebraska)