

# ***The University of Nebraska Economic Impact and Economic Development***

James Linder, MD

Chief Strategist, University of Nebraska

President, University Technology Development Corporation



# *Disclosures*



- Employee, University of Nebraska
- Managing Director, Linseed Capital LLC
- Board member- Nebraska Medicine; Pipeline Entrepreneurs; Nobl Health Inc.; Nebraska Applied Research Institute
- Founder, Tethon 3D Inc.
- Chair, Scientific Advisory Board- Streck Inc.

# ***Economic Impact of the University***

# Shareholder Report



UNITED STATES SECURITIES AND EXCHANGE COMMISSION  
WASHINGTON, D.C. 20549

**FORM 10-K**

ANNUAL REPORT PURSUANT TO SECTION 13 OR 15(d) OF THE SECURITIES EXCHANGE ACT OF 1934  
For the Annual Period Ended September 30, 2007

OR

TRANSITION REPORT PURSUANT TO SECTION 13 OR 15(d) OF THE SECURITIES EXCHANGE ACT OF 1934  
For the Transition Period From \_\_\_\_\_ To \_\_\_\_\_

Commission File Number N-1869

## The University of Nebraska

Nebraska  
(State of Incorporation)  
3835 Holdredge Street  
Lincoln, NE

47-004912  
(IRS Employer ID No.)  
69583  
(Zip Code)

Securities Registered Pursuant to Section 12(b) of the Exchange Act:	Name of Each Exchange on Which Registered
Common Stock	New York Stock Exchange

Securities Registered Pursuant to Section 12(g) of the Exchange Act: None

Indicate by check mark whether the registrant is a well-known seasoned issuer, as defined in Rule 405 of the Securities Act.  
Yes  No

Indicate by check mark if the registrant is not required to file reports pursuant to Section 13 or Section 15(d) of the Exchange Act. Yes  No

Indicate by check mark whether the registrant (1) has filed all reports required to be filed by Section 13 or 15(d) of the Exchange Act during the preceding 12 months (or for such shorter period that the registrant was required to file such reports), and (2) has been subject to such filing requirements for the past 90 days. Yes  No

Indicate by check mark if disclosure of delinquent filers pursuant to Item 405 of Regulation S-K is not contained herein, and will not be contained, to the best of registrant's knowledge, in definitive proxy or information statements incorporated by reference in Part III of this Form 10-K or any amendment to this Form 10-K. Yes  No

Indicate by check mark whether the registrant is a large accelerated filer, an accelerated filer, or a non-accelerated filer. See the definition of "accelerated filer and large accelerated filer" in Rule 12b-2 of the Exchange Act.

Large accelerated filer  Accelerated filer  Non-accelerated filer

Indicate by check mark whether the registrant is a shell company (as defined in Rule 12b-2 of the Exchange Act).  
Yes  No

As of March 31, 2007, the aggregate market value of the registrant's Common Stock held by non-affiliates of the registrant was approximately \$18.7 billion based on the closing sales price as reported on the New York Stock Exchange. As of October 31, 2007, 593,815,378 shares of the registrant's Common Stock, par value \$0.01 7/18 per share, were outstanding.

**DOCUMENTS INCORPORATED BY REFERENCE**

Portions of the definitive Proxy Statement to be delivered to shareholders in connection with the Annual Meeting of Shareholders to be held on January 23, 2008 are incorporated by reference into Part III.

Ticker: NUNE

UNIVERSITY OF  
**Nebraska**

# Organizational Leadership



President, Hank Bounds

UNIVERSITY OF  
**Nebraska**  
Lincoln

UNIVERSITY OF  
**Nebraska**  
Medical Center

UNIVERSITY OF  
**Nebraska**  
Omaha

UNIVERSITY OF  
**Nebraska**  
Kearney

UNIVERSITY OF  
**Nebraska**  
NCTA

# *Record of Shareholders*



- Nebraska Taxpayers: 1,232,010
- Budget Revenue
  - State of Nebraska Allocation \$528,000,000
  - Non-State Funds \$1,962,000,000\*
- Budget contribution per taxpayer: \$428.56

\*Excludes Nebraska Medicine

# Assets



Buildings: \$4B

Employees: 12,541

Goodwill: Variable



UNIVERSITY OF  
**Nebraska**



# THE ECONOMIC AND SOCIAL CONTRIBUTION OF THE UNIVERSITY OF NEBRASKA TO THE STATEWIDE ECONOMY

JANUARY 2016



**TrippUmbach**  
Research • Strategy • Impact

UNIVERSITY OF  
**Nebraska**

UNIVERSITY OF  
**Nebraska**



# *Economic Impact of NU\**



- Total \$3.9B (IMPLAN Econometric model)
  - Direct 2.1B
  - Indirect 1.8B (through multiplier effects)
- Jobs supported by NU activities 34,730
- Tax revenue generated from University activities \$138.5M
- Excludes Nebraska Medicine

\*FY 2013-2014

# Economic impact from NU Campuses



State-wide Economic Impact of each Campus of the University of Nebraska

Entity	Employment (jobs)	Labor Income	Value Added	Economic Output
<i>Curtis</i>	119	\$2,770,030	\$4,113,614	\$9,812,923
<i>Kearney</i>	2,169	\$71,055,373	\$103,791,279	\$229,407,499
<i>Lincoln</i>	16,999	\$621,271,724	\$883,381,750	\$2,004,204,465
<i>Omaha</i>	5,141	\$167,540,958	\$250,178,290	\$583,046,454
<i>System Administration</i>	370	\$12,373,622	\$17,847,363	\$46,975,966
<i>UNMC (Academic Only)</i>	9,932	\$475,664,280	\$616,894,460	\$1,061,553,415
<b>TOTAL</b>	<b>34,730</b>	<b>\$1,350,675,987</b>	<b>\$1,876,206,756</b>	<b>\$3,935,000,722</b>

> 6-fold return on State appropriation

# Nebraska Medicine



- Clinical activity of UNMC
- \$4.2B economic impact
- Supports 28,927 jobs
- Generates \$99.1M in State and local tax revenue





***University Contributions to  
Economic Development in Nebraska***

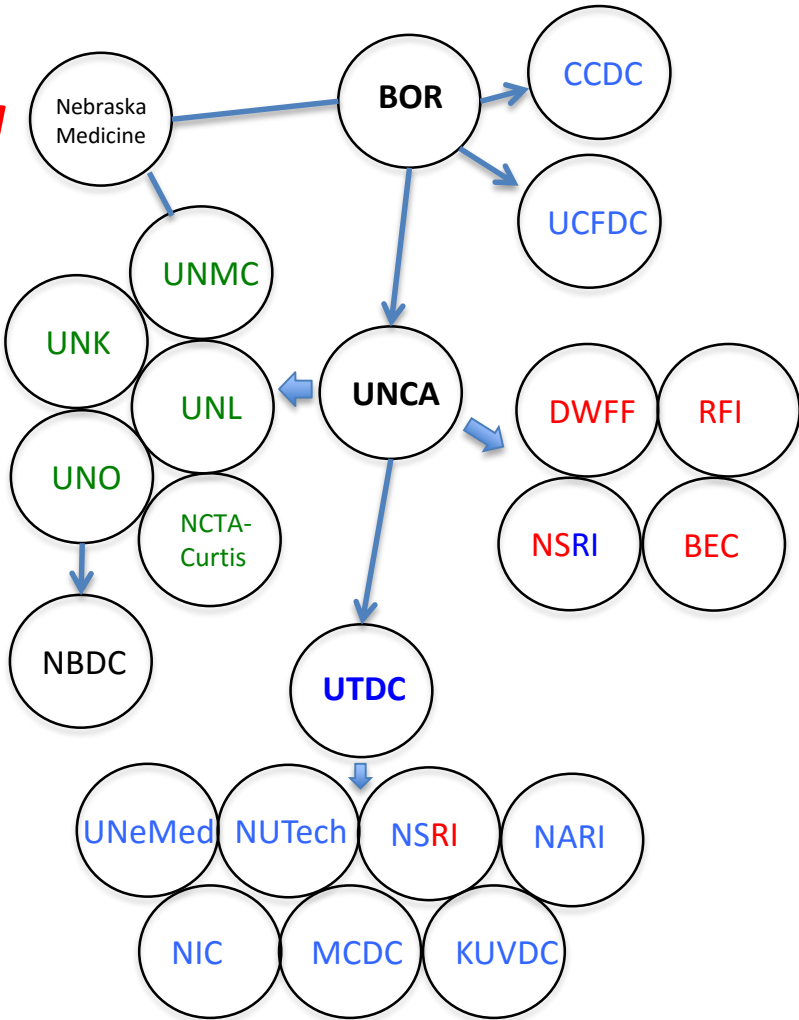
UNIVERSITY OF  
**Nebraska.**

# University of Nebraska

Economic Development from graduates, service and innovation

Key:  
Green- NU Administrative Campus  
Red- University-Wide Institute  
Blue- Board of Regents Subsidiary  
Black- Other

\*Excludes Campus Centers and Institutes







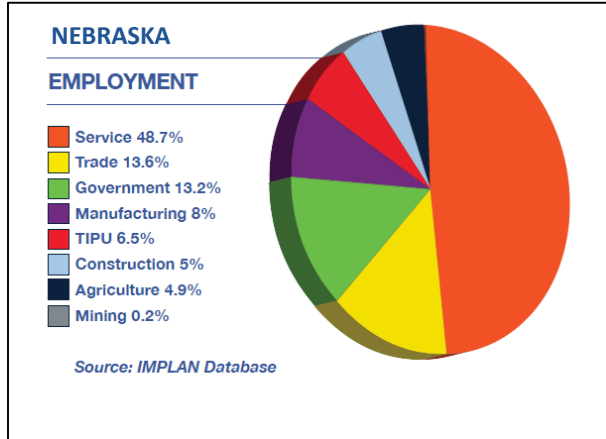
# *University Graduates*



# Graduates are our major “product”

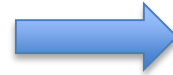
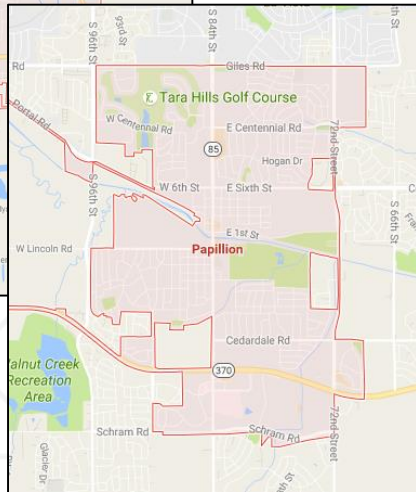
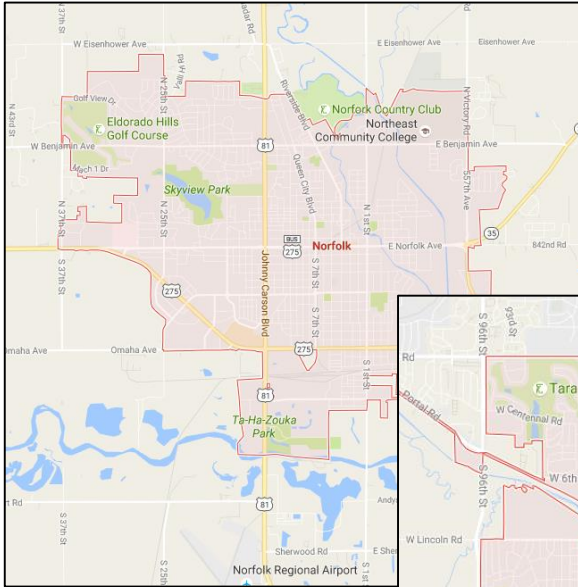


We impart skills so they can lead a productive life



# NU Students

# Annual Graduates



~52,000

~10,000



# Higher Education Business Issues



Student Pipeline



Cost & Debt



Curriculum Content &  
Delivery

# *Finishing the Product can take years*



# *University Service*



UNIVERSITY OF  
**Nebraska**

MICHAEL F. SORRELL  
CENTER FOR HEALTH SCIENCE EDUCATION

  
**UNMC**  
UNIVERSITY OF NEBRASKA MEDICAL CENTER







# *Nebraska College of Technical Agriculture*



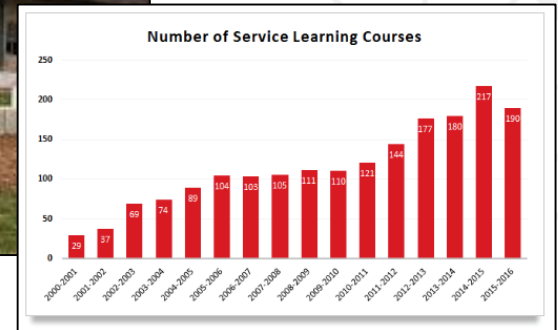
- Ranked 9<sup>th</sup> out of 821 Community colleges
- Agriculture and veterinary technology, and food production
- Serves Nebraska agricultural industries



# Community Engagement- UNO



- Service Learning Academy
- Barbara Weitz Center serves 250 community organizations
- Public policy dialogue



# University-Wide Institutes



Service

Policy Development

Research



# University of Nebraska Medical Center



- Health fairs, senior care, mobile nursing
- Sharing Clinics
- Science Cafes
- Emergency response training with simulators

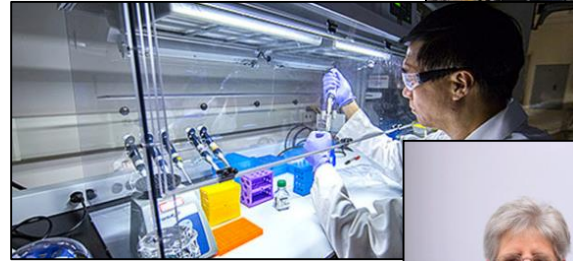




# Nebraska Business Development Center



- Chartered by the SBA
- In 2015 served ~3,000 Nebraska clients
- Will do more through partnerships



# Research Core Services



- Provide high-cost equipment and services
- Serves hundreds of scientists, and more than 30 companies



# *University Innovation*



UNIVERSITY OF  
**Nebraska**





# External Grant Funding



- Record \$267.8M in 2015
- 24% increase in UNMC funding from industry
- Multiplier effect on local economy



# *University Technology Development Corporation*



- Holding corporation for 7 companies owned by the Board of Regents of Nebraska
- Facilitates and focuses partnering, increases responsiveness
- Governance by both University and non-university members
- Follow best practices, risk management and reporting

# Development Corporation Affiliations with Campus



	UNL	UNO	UNMC	UNK
NuTech Ventures	X	x	x	x
UNeMed	x	x	X	
NSRI	X	X	X	
NARI	x	X	x	
NICDC	X			
MCDC			X	
KUVDC				X

X -Primary interaction    x - Secondary Interaction

Technology Commercialization of Faculty Inventions

Specialized Research for DOD or Industry Partners

Public-Private Land Development

# NuTech Ventures




- Technology transfer for UNL faculty through licensing activities
- Diverse portfolio from seed germplasm to surgical devices



# UNeMed






- Putting biomedical inventions to the world
- Start-up support and partnering with UNeTech
- Facilitating international partnerships

  
25TH ANNIVERSARY  
**unemed**  
technology transfer for UNMC since 1991

Cancer (11)  
Cardiovascular (3)  
Drug delivery (7)  
Infectious Diseases (4)  
Medical Devices (17)  
Metabolic (3)  
Neurologic (4)  
Other (1)  
Research Tools (12)  
Software (2)

## Cancer

UNMC technologies in the oncology field available for licensing  
Showing all 11 results

 Imaging Nanoparticles <a href="#">Read more</a>	 Nanoformulated Orlistat for cancer treatment <a href="#">Read more</a>	 CCL21-Based Immunotherapy for Cancer <a href="#">Read more</a>	 Target for Cancer Stem Cells <a href="#">Read more</a>
 MUC1 Cancer Vaccine <a href="#">Read more</a>	 Breast Cancer Biomarker <a href="#">Read more</a>	 Cancer Biomarker <a href="#">Read more</a>	 Prostate Cancer Cells <a href="#">Read more</a>
 Systemic Administration of siRNA	 NF-kB Pathway Inhibitors	 Nanogel Cancer Treatment	



# Nebraska Innovation Campus



- Goal- 2.2M sq. ft. to be constructed by 2037
- Today- 380,000 sq. ft. finished, 91% leased
- New- 80,000 sq. ft. building begins in 2016



# Medical Center Development Corporation



- ~ 30 acres of mixed use development (2019-2025)
- Projected annual economic impact of \$258M
- Expected employment of 2,587
- Can create \$2.1M annually for local TIF and \$103M in state and local taxes



Draft concepts

# *Kearney-University Village*



- Emerging 104 Acre mixed-use development adjacent to UNK
- Residential, dormitory, office, retail and service
- Regional hub for engagement and entrepreneurship

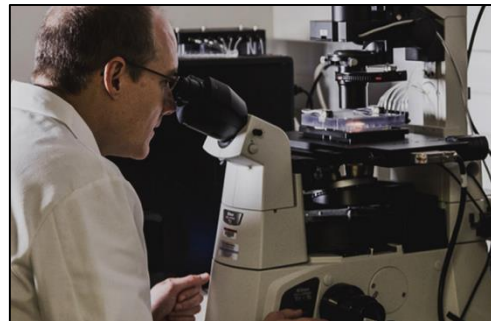
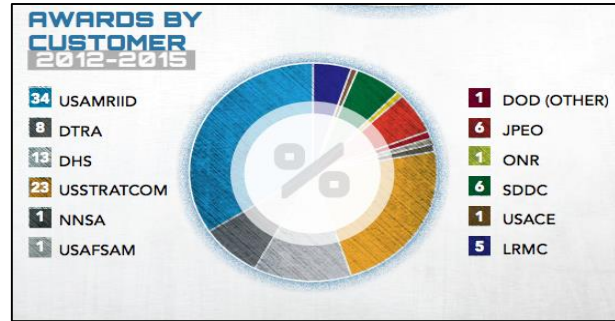




# National Strategic Research Institute



- A Department of Defense University Affiliated Research Center (UARC)
- Combating Weapons of Mass Destruction, and providing special competencies



# Nebraska Applied Research Institute



- Corporate customers
- Critical system infrastructure; simulation/modeling; data analytics
- Business engagement



# *Pipeline Entrepreneur Fellowship*



- 12-14 fellows annually from Nebraska, Kansas and Missouri
- Mentoring high-growth entrepreneurs
- Builds global network



# *Nebraska Pipeline Fellows*



Blake Lawrence- Opendorse

Ben Pankonin- Social Assurance

Ben Vu- SkyVu Entertainment

Ben Blecha - HERO

Leandro Castro- MultiMechanics

Paul Jarrett - Bulu Marketplace

Matthew Medlock- PaySAFE

Rob Rhoades- InjurRelay, MTRAX

Brett Byman - Nobl Health

David Chait – Travefy

Luis Lopez- Crumb

Jennifer Amis- Enconter Telehealth

Dusty Reynolds- Racenote

Mark Zmarley- HipPocket

Clayton Chapman- Grey Plume Provisions

Keith Fix- Blabfeed

Justin Kaloff- Infogressive


Devon Seacrest- Digital Environments

Vishal Singh- Quantified Ag


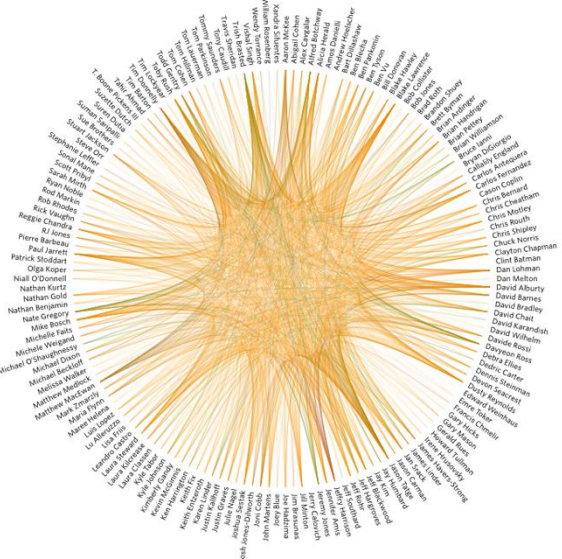
# Pipeline Benefits



- Network effect
- Ecosystem Development
- Enhanced Success
- Job Growth



**James Linder**  
UNIVERSITY OF NEBRASKA TECHNOLOGY DEVELOPMENT CORPORATION  
Omaha, NE



**Tom Hillman**  
LEWIS & CLARK VENTURES  
Founder/Sponsor  
St. Louis, MO

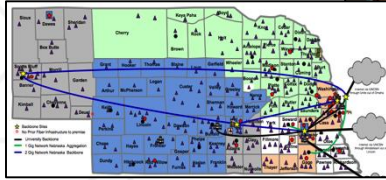
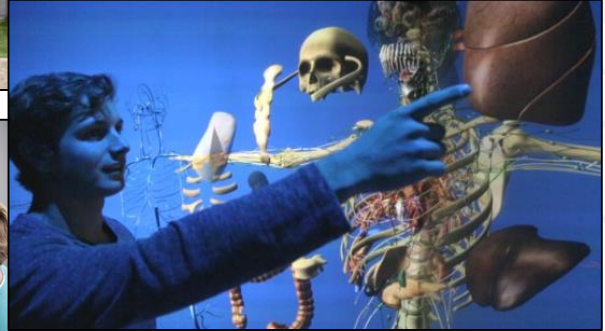
in



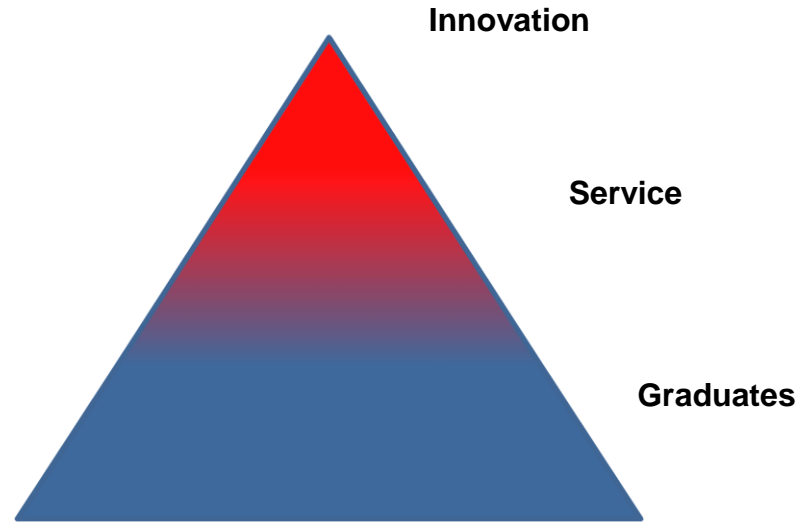
# Global Center for Interprofessional Education



- 3D visualization educational technology
- Home for the iEXCEL program
- State-wide and global reach



# *In Closing, the University has Major Impacts on Economic Development*



# *Graduates matter because...*

Without talent,  
nothing can be  
accomplished



# And...

- NU is woven into Nebraska life
- We have great pride in creating opportunities



*Thank you-*



[jlinder@nebraska.edu](mailto:jlinder@nebraska.edu)

@drjlinder