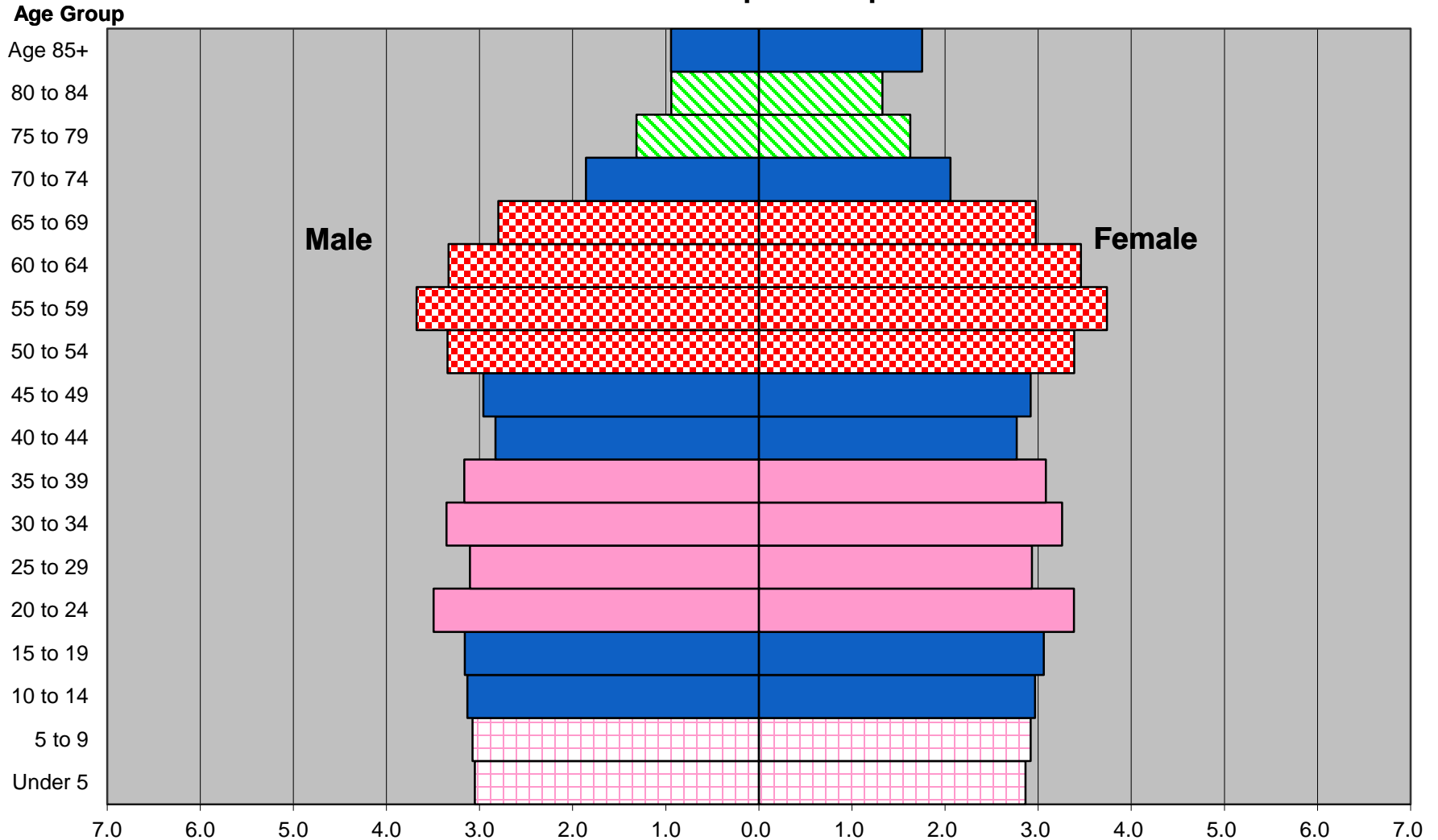




The Nebraska majority population has an “hourglass” shape, with a large number of baby boomers, which will likely lead to relatively high deaths and “natural loss”

July 1, 2016 Nebraska Estimated Population by Sex and Five-Year Age Group: White non-Hispanic Population



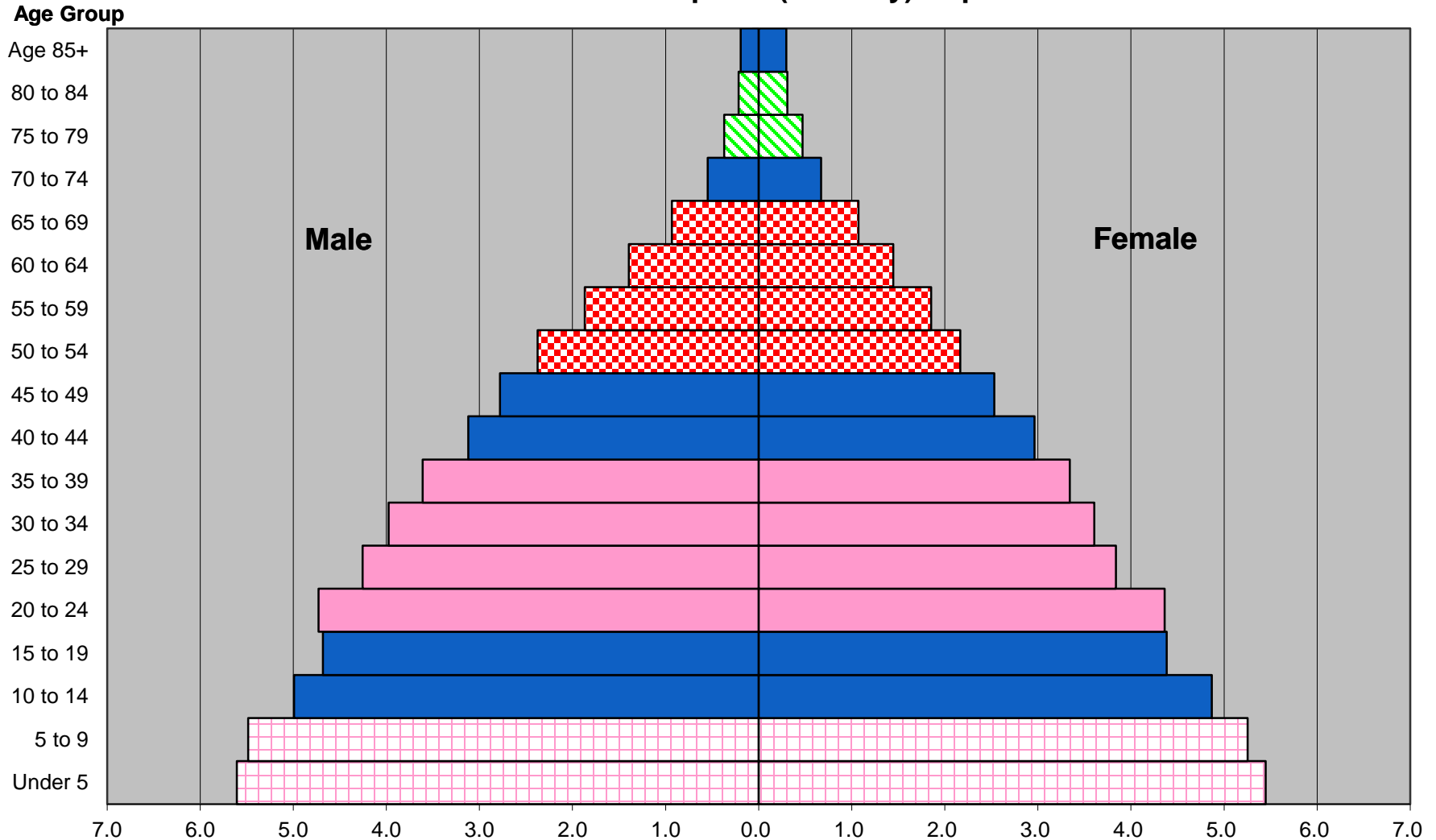
Source: 2016 Vintage Population Estimates, U.S. Census Bureau

Green lines depict the depression cohort; red checker shows the "baby boom"; pink represents the "baby boom echo"; pink crosshatch shows the "3rd wave"



The Nebraska minority population has a “pyramid” age structure, which will likely lead to relatively high births and continued growth through “natural increase”

July 1, 2016 Nebraska Estimated Population by Sex and Five-Year Age Group: Non-White or Hispanic (Minority) Population

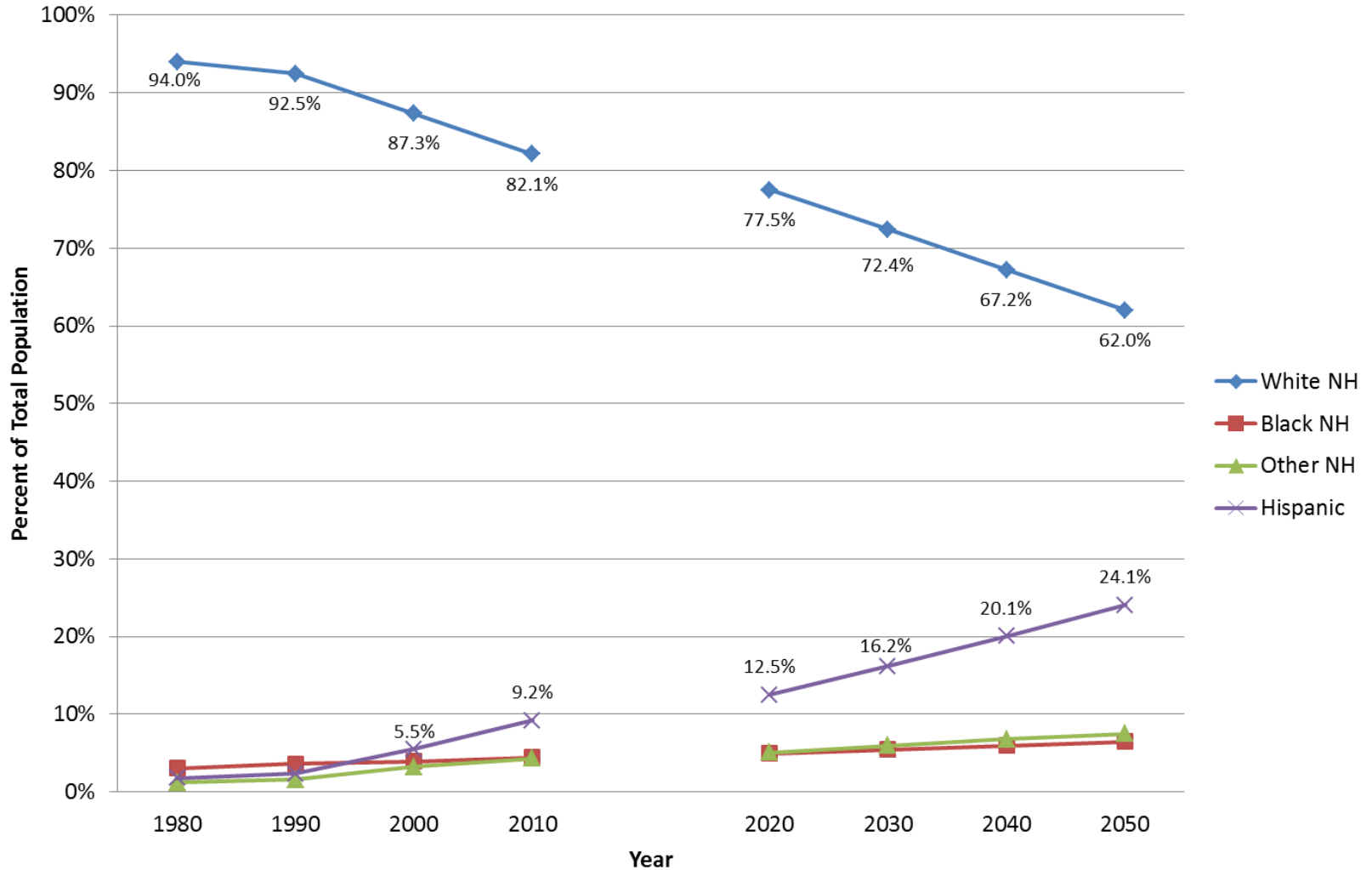


Source: 2016 Vintage Population Estimates, U.S. Census Bureau

Percent of Total Population

Green lines depict the depression cohort; red checker shows the "baby boom"; pink represents the "baby boom echo"; pink crosshatch shows the "3rd wave"

Percent of Nebraska Population by Race/Ethnicity: 1980 to 2010 with 2020 to 2050 Projection

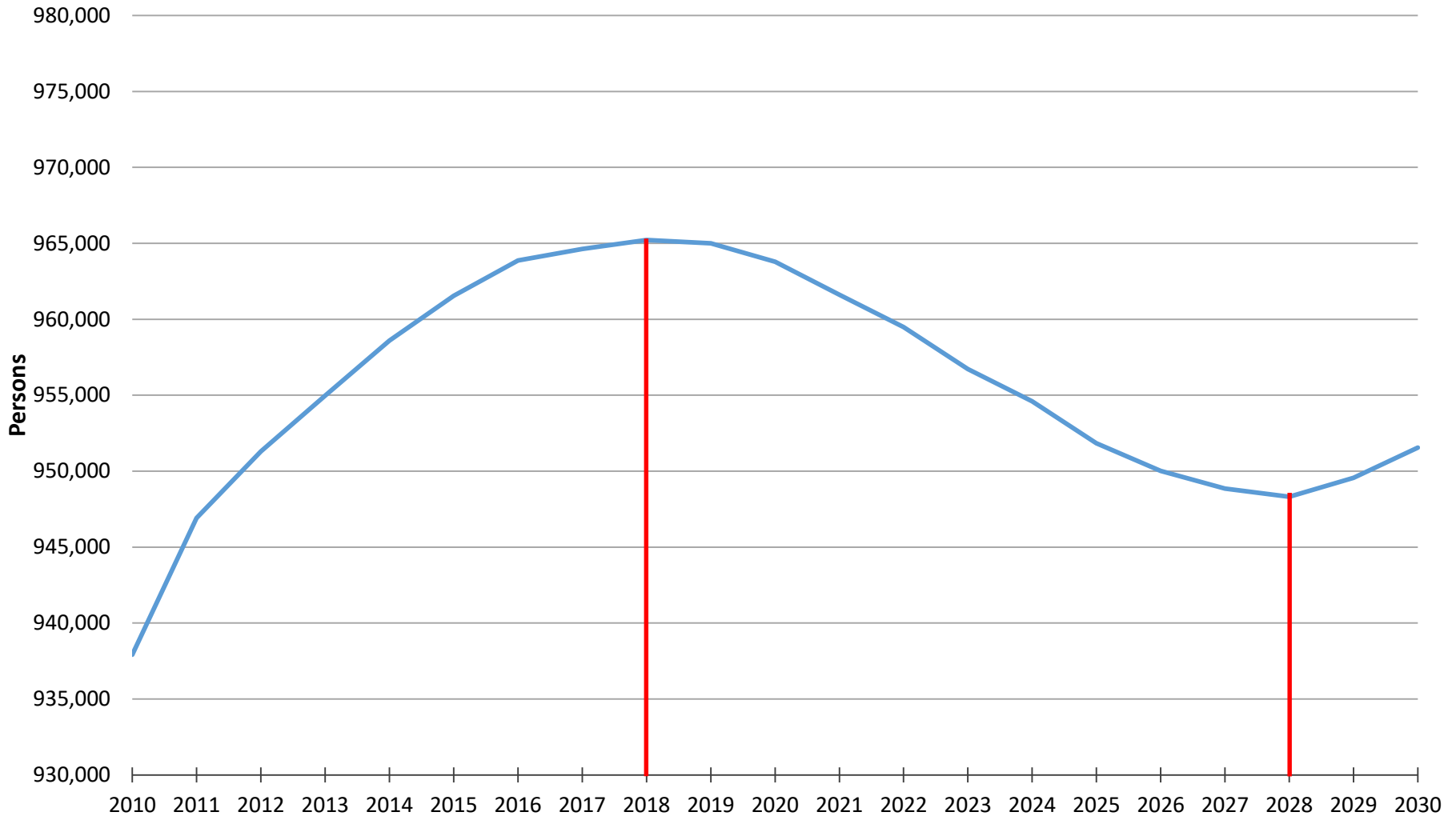


Source: Decennial Censuses; CPAR projections, June 2013



Population “Flow” Does Not Bode Well for a Rising Labor Pool

Projected Population Aged 25-64 for Nebraska: 2010 to 2030



Sources: 2010 Census, U.S. Census Bureau; December 2015
Nebraska County Population Projections, CPAR @ UNO

Keep the conversation going

Want to discuss these issues more?

Contact:

- Sarah Moylan at smoylan@selectgreateromaha.com
- Garry Clark at garry.clark@fremontecodev.org